

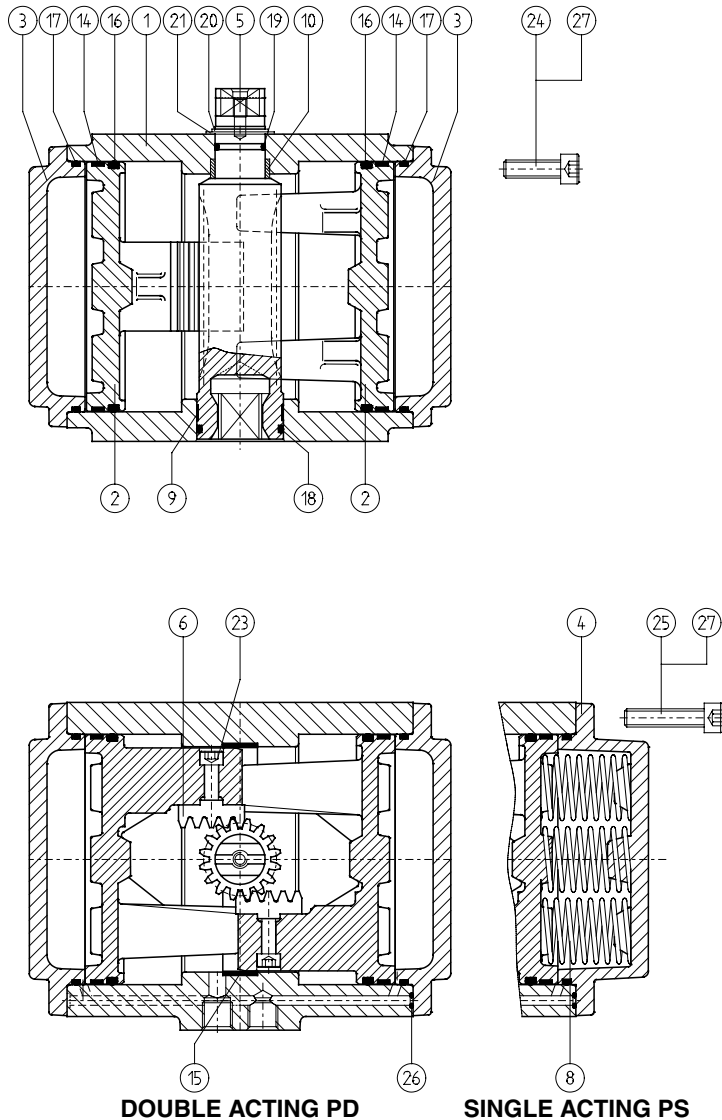
Data sheet

Sheet No.: 1.101.30 Rev. B

Date: January 2012

CONSTRUCTION, PARTS AND MATERIALS P-SERIES ACTUATORS

P



DOUBLE ACTING PD

SINGLE ACTING PS

Parts			Materials		Executions		
Nr.	Description	Qty.	Description	Specification	Std	S.S. Shaft	CSR
1	Body	1	Aluminium Alloy	GAISI10Mg, DIN 1725/2	-	-	6
2	Piston	2	Aluminium Alloy	GAISI 7Mg, DIN 1725/2	-	-	-
3	End Cap PD	2	Aluminium Alloy	GAISI10Mg, DIN 1725/2	-	-	6
4	End Cap PS	2	Aluminium Alloy	GAISI10Mg, DIN 1725/2	-	-	6
5	Central drive shaft	1	Aluminium Alloy	AlZnMgCu1.5, DIN 1725/1	1	4	4
6	Gear Rack	2	Steel	C45, DIN 17200	-	-	-
8	Spring	14	Carbon Spring Steel	Class C, DIN 17223	2	2	2
9	* Bearing Bush	1	Nylatron GS	PA6.6 + MoS2	-	-	-
10	* Bearing Bush	1	Delrin	POM	-	-	-
14	* Guide band	2	PTFE, Carbon filled	PTFE + 25% C	-	-	-
15	* Guide band	2	PTFE, Carbon filled	PTFE + 25% C	-	-	-
16	* O-ring	2	Nitrile Rubber	Buna N	-	-	-
17	* O-ring	2	Nitrile Rubber	Buna N	-	-	-
18	* O-ring	1	Nitrile Rubber	Buna N	-	-	-
19	* O-ring	1	Nitrile Rubber	Buna N	-	-	-
20	* Spring Clip	1	Carbon Spring Steel	Ck75, DIN 17222	2	5	5
21	* Thrust Washer	1	ZEDEX 100 K	-	-	-	-
23	Bolt	4	Alloy Steel	12.9 DIN 912	-	-	-
24	Endcap Bolt PD	20	Alloy Steel	8.8 DIN 912	2	4	4
25	Endcap Bolt PS	20	Alloy Steel	8.8 DIN 912	2	4	4
26	* O-ring	2	Nitrile Rubber	Buna N	-	-	-
27	Threaded insert	20	Steel	9S MnPb28K	3	3	3

* Recommended spare parts (contained in Repair kit)

Notes

- 1 Hard anodised aluminium alloy: AlZnMgCu1.5, DIN 1725/1
- 2 Deltatone® Coating
- 3 Zinc plated and passivated
- 4 Stainless Steel AISI 304

- 5 Stainless Steel, X35CrM017
- 6 CSR Coating (see 4.204.02)
- 7 P4000 has a stainless steel (AISI 304) locking ring between spring clip (20) and thrust washer (21)
- 8 P4000 has in the springs a guiding bush (PVC)

Finish

- Standard : Polyester non-TGIC based powder coating (see data sheet 4.204.01)
- CSR : CSR Coating (see data sheet 4.204.02)

EL-O-MATIC

www.El-O-matic.com

Copyright © Emerson Process Management. The information in this document is subject to change without notice.

Updated data sheets can be obtained from our website www.El-O-Matic.com or from your nearest Valve Automation Center **USA**: +1 813 319 0266 **Europe**: +31 74 256 10 10 **Asia-Pacific**: +65 6501 4600



K.E. JEPSEN